



**ST EDWARD'S**  
**COLLEGE**  
WHERE YOUNG MEN ACHIEVE

*St Edward's College is a Catholic school  
in the Edmund Rice tradition*

## Compassion



## Forgiveness



## Respect



# College VALUES



## Inclusion



## Resilience

## Commitment to personal growth





## LEARNER PROFILE

## EXPECTATIONS

### Ready to learn



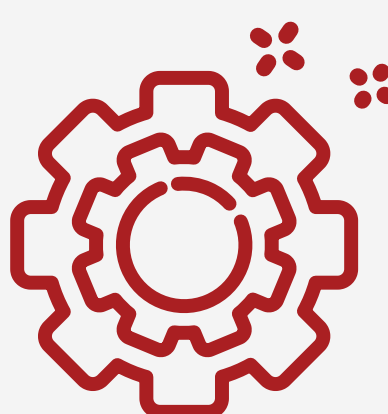
- On time
- Laptop charged, brings pen, books and equipment
- Calm and settled, allows others to learn
- Safely operates in the classroom

### Actively engages in learning



- Pays attention
- Completes tasks to the best of their ability
- Perseveres when challenged by a task
- Submits tasks when required

### Demonstrates creative, critical and problem solving skills



- Considers alternate perspectives and solutions
- Draws conclusions based on evidence and research
- Independently and collaboratively solves problems
- Attempts to present new ideas when appropriate

### Communicates and collaborates



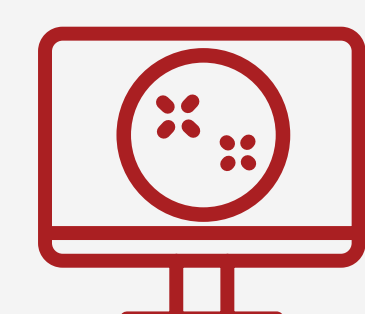
- Contributes to discussions
- Works respectfully and inclusively with peers
- Contributes equally to group work
- Actively listens to others

### Challenges themselves to improve



- Independently looks for ways to improve
- Seeks, accepts and applies feedback
- Sets goals for improvement

### Effectively uses technology for learning



- Presents research information in their own words
- Identifies valid and reliable sources of online information
- On-task with their device
- Proficient use of applications