

## THOUGHT FOR THE DAY

### Edmund Rice Education Australia Touchstone Justice and Solidarity

*We are committed to justice and peace for all, grounded in a spirituality of action and reflection that calls us to stand in solidarity with those who are marginalised and the Earth itself.*



The Christian Brothers maintain a proud history of service to those at the margins of society both nationally and internationally. This commitment is strongly demonstrated through the range of ministries and services they provide in impoverished regions throughout the world. I am privileged to have been provided with the opportunity to participate in an immersion experience in Nairobi, Kenya over the last school holidays to witness the dedication of Christian Brothers from Australia working alongside Kenyan Brothers and many volunteers, to provide care for people of the Kibera and Mucuru slums of East Africa. These wonderfully passionate men and women provide a range of educational, health, employment and community services to the poorest of poor people who are living in conditions that words cannot describe.

St Edward's has established a strong relationship with organisations such as the Ruben Centre, within the Mucuru slum. This centre provides free quality education for 2600 students, a health clinic, a mother and babies centre, a children's nursery, a dentist, a community focused local radio station, an environmentally sustainable fruit and vegetable garden and a variety of adult educational services. The Mary Rice Centre provides education and physical therapies for disabled students from the Kibera slum, in classrooms made from shipping containers. This facility also provides a meeting place for the Kibera Youth group who plan and implement fun and challenging day camps throughout the year, for young people from the slum. *Women for Women*, an organisation which is conducted by the Loretto Sisters, seeks to find sponsorships and placement for young children into primary and secondary schools as well as micro-finance and educational programs for women from the Kibera slum. These are just a few of the amazingly generous, life giving agencies that exist in these challenged communities.



In November of this year, five Year 12 students will accompany Mr English and myself on a similar immersion to Kenya. This life changing experience will provide an opportunity for students to work with youth leaders in running day camps, spend time with disabled children at the Mary Rice Centre, participate in cross cultural conversations with students at informal schools in the slums of Kibera as well as visit to the Nairobi National Park *Sheldrick Elephant Orphanage*. This is a great opportunity which I encourage all students to consider participating in when they reach the senior years at St Edward's.

## FROM THE PRINCIPAL

### RISING TO THE CHALLENGE

At the start of this year, students were encouraged to Rise to the Challenge of achieving their personal best in all endeavours. The Semester One Academic Reports provide detailed feedback for each student in their pursuit of this goal. It is important to emphasise the role that the teacher's comments and indication of level of achievement in relation to the Code for Learning play in guiding students for ongoing improvement. Students are encouraged to read carefully and reflect on these aspects of the report in establishing learning goals for the remainder of the year. Religious Education teachers will once again work with students in reassessing their learning goals and developing strategies for ongoing improvement. Parents are encouraged to engage in conversations with their sons about these goals. The Term 3 Parent Teacher Evenings, which are to be held on Tuesday 22<sup>nd</sup> August and Thursday 31<sup>st</sup> August, will provide students and parents with an opportunity to discuss student progress to date. Parents who would like information on how best to support their sons in achieving their goals can visit the Independent Learning Handbook on the College Website on:

<https://www.stedwards.nsw.edu.au/curriculum-learning/independent-learning/>

### YEAR 12 TRIAL HSC EXAMS

The HSC Trial Examinations will begin on Monday 31 July and conclude on Monday 14 August. These examinations are the final piece of assessment in many of the HSC courses and significantly contribute to the HSC final mark. I would like to wish all Year 12 students every success in these examinations. The Trial HSC Examination Timetable is available on the College website on:

<https://www.stedwards.nsw.edu.au/news/hsc-trial-examination-timetable/>

### ST EDWARD'S COLLEGE OLD BOYS UNION

The St Edward's College Old Boys Union will be holding a Back to Eddies Day for past students on Sunday 10 September. The day will begin at 1.00pm and conclude at 4.00pm. A BBQ, live entertainment, soft drinks and beer supplied by Six String Brewing Company (whose owners are old boys from St Edward's) will be available on the day. This is a wonderful opportunity for ex-students to visit the school, tour the facilities and engage with old school friends to reminisce about their time at St Edward's. The Old Boys are looking to establish a directory for ex-students to advertise their business as a free service for members of the organisation. Invitations will be emailed to ex-students for who we have current details as well as being available on the Old Boys Facebook page on:

<https://www.facebook.com/StEdwardsEastGosfordOldBoysUnion/>

It would be greatly appreciated if current parents could pass on this information to any old boys that they know, encouraging them to also like the Old Boys Union Facebook page.

### PARENTS AND FRIENDS TRIVIA NIGHT

The Parents and Friends association have organised the Annual Trivia Night in support of the Haven Education Centre. This event is to be held on Saturday 26 August in the Edmund Rice Centre. The Parents and Friends Association invites all parents to consider establishing a team to participate in a wonderful evening in support of a great cause. Parents who would like to attend but do not believe that they can make up a team are invited to purchase a ticket and you will be able to join a team on the night. Further details regarding the Trivia Night are available on the flyer below. Any parents who would be able to assist in the organisation of the night or who would be willing to donate prizes are asked to contact the P & F on the following email: [pandf@stedwards.nsw.edu.au](mailto:pandf@stedwards.nsw.edu.au)

**Mr Mark Bonnici**

**College Principal**



## CANTEEN

The canteen is looking for any new volunteers to help in the canteen. This year our volunteer numbers have halved and we are struggling to get the amount of food made to feed our hungry boys. We try to give the boys good healthy choices at a minimal cost. If we don't get more help this will mean we will have to look for alternative ideas and prices will increase. If you have a spare day over the next 2 terms we'd love to have you help.

You can contact the canteen through the College phone number – 4321 6400.

Thank you, Sue Devetak

## SOCIAL JUSTICE

Pat Dell's contact details are 4321 6439 or [pdell@stedwards.nsw.edu.au](mailto:pdell@stedwards.nsw.edu.au)

### HOMELESS MEAL SUPPORT

St Edward's staff, students and parents have been volunteering at Gosford Uniting Church for some years at the Sunday lunch for our local disadvantaged people. The College thanks parents – Louise Waymouth and Maureen May for managing the meal service. We are looking for a parent to join this group to help with the service. This event is approximately every 6 weeks and please contact me if you would like to join in this ongoing local need.

Thank you to the staff, students and parents who supported over the holiday period at Coast Shelter, Gosford Uniting Church, NAIDOC Week events, as well as sports clubs and parish support.

Waterford is a wonderful opportunity to build team effort between staff, students and parents and we thank people for their generous spirit.

### WATERFORD

A reminder that this compulsory program is due for all students in Years 8-11, by week 9 of Term 3. The College insists that every student submits the program and on time. Please contact me if you have any concerns.

Term 3 Waterford opportunities include:

- 40 Hour Famine
- Operation Christmas Child
- Kings Cross
- Coast Shelter
- Homeless support Gosford Uniting Church

Students are to find ways in the local community and/or through school-based offerings to complete our program.

**Mr Pat Dell (Social Justice Coordinator)**

## SPORT

### **COLLEGE ATHLETICS CARNIVAL**

A reminder about **the new date of Friday 25 August (Week 6 - Term 3)**.

Information for selection trials for the BBSSSA carnival will be placed in the morning notices on the first Monday back at the College. The trials will run as follows:

- Opens selection trials will be conducted during lunchtimes in Weeks 1 & 2
- U12-16's selection trials will be conducted during Friday Afternoon Sport
  - Week 2 (28/7) and
  - Week 3 (4/8)
  - Friday 11/8 will be a back-up day

## NATIONAL CONSISTENT COLLECTION OF DATA FOR STUDENTS WITH A DISABILITY

The Nationally Consistent Collection of Data on School Students with Disability (the national data collection) is an annual collection that counts the number of school students receiving an adjustment due to disability and the level of reasonable adjustment they are receiving. This information helps teachers, principals and educational authorities better plan to support students with disability so that they may take part in school on the same basis as other students.

The national data collection provides an opportunity for schools to review their learning and support systems and processes with the aim of improving education outcomes for their students with disability. This will take place in August and only involves numbers, not personal information.

For further factual information you may visit the following link:

[https://docs.education.gov.au/system/files/doc/other/2017 - nccd -  
\\_fact sheet for parents and carers v5. pdf](https://docs.education.gov.au/system/files/doc/other/2017_-_nccd_-_fact_sheet_for_parents_and_carers_v5_.pdf)

Similarly you may contact our Learning Support Coordinator via email

[bkiekebosch@stedwards.nsw.edu.au](mailto:bkiekebosch@stedwards.nsw.edu.au)

## CALENDAR - Term 3, 2017

<b>Week 2B</b>	Tue	25 Jul	RL Country Cup Opens Team
	Wed	26 Jul	RL Country Cup Opens Team
	Thu	27 Jul	Australian Maths Competition
	Thu	27 Jul	Australian Maths Competition
	Thurs	27 Jul	RL U15's
<b>Week 3A</b>	Mon	31 Jul	HSC Trial Exams begin
	Tue	1 Aug	Year 11 Science Excursion
	Tue	1 Aug	RL NSW All Schools Final U13's-U16's RL BBSSSA Gala Day U13B's
	Fri	4 Aug	Japanese visitors arrive

## CANTEEN ROSTER FOR WEEK COMMENCING MONDAY 24 July 2017

<b>Monday</b>	<b>Tuesday</b>	<b>Wednesday</b>	<b>Thursday</b>	<b>Friday</b>
Melisa Lienesch Angela D'Bras Bill Mclean Sharyn Cottam	Jo Smith Katrina Pugsley Deborah Foster Nicole Fallon	Nichole Holborow Ursula Best Kin Langford Kate Glasson	Nora Koleszar Valerie Crowe Cathy Borg Kristy Martin	Lisa Vincent Karen Hislop Von Wood Janine Paull Maryanne McHugh Julia Conroy Laura Scott





**SATURDAY 28  
OCTOBER 2017  
AVOCA BEACH**

**A TAG TEAM SURFING EVENT TO RAISE FUNDS  
FOR LIFELINE CENTRAL COAST**

Supporting those who may be at risk in times of crisis, and to equip individuals, families and the community to be resilient and suicide-safe



**ENTER NOW**

Four surfers per team: open to male and female surfers  
Top fundraisers get first pick of the pros to join your team

Casper Chapman, Photo: Bernadette McAlinden

ENQUIRIES: JO LYNAS, M: 0415 901 361 E: JO@LYNASEVENTS.COM.AU



24 HOUR TELEPHONE CRISIS SUPPORT 13 11 14  
AND LOCAL FACE TO FACE COUNSELLING



## **Spirituality in the Pub**

SIP CENTRAL COAST

**The Grange Hotel Function Room - Cnr: Renwick St & Pacific Hwy, WYOMING**

1<sup>st</sup> Tuesday of the month March – October and 2<sup>nd</sup> Tuesday in November

Bistro opens at 5-30pm

Theme 2017: "My Spirituality: Influence on the Way"

**Tuesday 1<sup>st</sup> August, 2017, 7. 30pm - 9. 00pm**

**Darryl Neve:** Born in NZ to a committed Christian family where he imbibed a deep love of Christ, Darryl became a Baha'i at age 18. Moving to Australia he worked in aged care before resuming his full-time occupation as a broad-ranging musician. Married with 3 boys, Darryl has 6 granddaughters.

**Sally Longley:** An experienced spiritual director and retreat leader with extensive cross-cultural experience, Sally is Hon Pastoral Carer in her church, qualified in Theology and the Ignatian Spiritual Exercises and retreats of all denominations. Her publications include Walking the Labyrinth as the Beloved in John's Gospel, and Christian Meditation: 5 Ways to Pray.

**SIP Central Coast is an Ecumenical & Interfaith Speakers Forum with Q's & A's.**

*The focus is on developing understanding & encouraging dialogue about Spirituality through sharing one's life journey. We meet 1st Tuesday in the month from March to October and 2<sup>nd</sup> Tuesday in November.*

Enquiries: Maryke - 4328 2596 or 0498 588 261



**Come and be a part of the Central Coast Junior  
Cricket's  
PREMIER CLUB –The Entrance Junior Cricket Club**



**Cricket Registration: 29<sup>th</sup> July, 5<sup>th</sup> and 12<sup>th</sup> August  
from 2-5pm @ The Entrance Leagues Club**

**COST:**

- Juniors U11s – U16s - \$190
- T20 Blast (U9s) - \$130
- In2Cricket - \$100

**Registration includes:** Playing shirt,  
Training top and Training shorts and a hat.



**Any further enquiries please contact:**

Vicky Watt – Club Secretary

[vickywatt.tejcc@hotmail.com](mailto:vickywatt.tejcc@hotmail.com)

Terrie Bradshaw – Registrar

[terriebradshaw.tejcc@hotmail.com](mailto:terriebradshaw.tejcc@hotmail.com)

## Stressed about school costs?

**Would \$500 help pay for uniforms, books, excursions, tutoring, a laptop or tablet?**

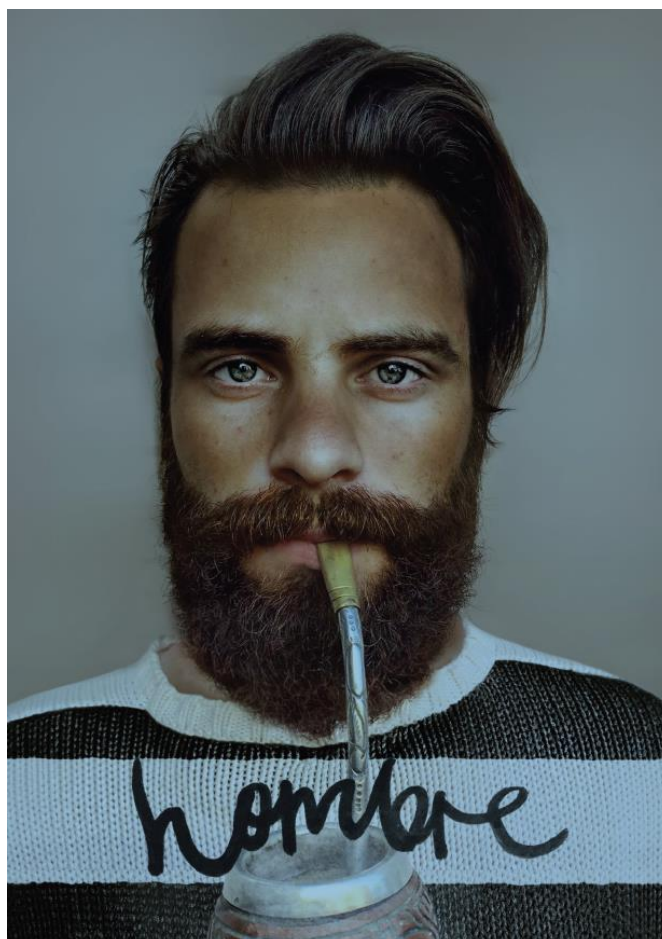
Saver Plus matches your savings for school costs, dollar for dollar, up to \$500!

You may be eligible if:

- you have a Health Care or a Pensioner Concession card and,
- you or your partner have some regular income from work such as full-time, part-time, casual or seasonal work.

**Contact Saver Plus Coordinator Meredith Lawson**  
 0428 282 900 / 02 4333 8061  
[meredith.lawson@thesmithfamily.com.au](mailto:meredith.lawson@thesmithfamily.com.au)  
 Or enquire online at [www.saverplus.org.au](http://www.saverplus.org.au)

Saver Plus is an initiative of Brotherhood of St Laurence and ANZ, delivered in partnership with The Smith Family, Berry Street and The Benevolent Society and other local community agencies. The program is funded by ANZ and the Australian Government Department of Social Services. Go to [www.dss.gov.au](http://www.dss.gov.au) for more information.



homebrew



MONDAYS FROM MAY 22ND  
 // 7PM - 10PM //  
 2 ILYA AVENUE, ERINA

**FOGHORN**  
 BREWHOUSE

EVERY PLAYER GETS A PRIZE!  
 \*REGISTER NOW FOR YOUR 15MINS OF FROTH  
 TEXT: 0414 444 052 | [homebrew@foghornbrewhouse.com.au](mailto:homebrew@foghornbrewhouse.com.au)